



## SINGLE-JET COLD WATER METER: 100 SERIES

WATM100001 1/2" MBSP cold water meter

WATM100004 3/4" MBSP cold water meter

### OVERVIEW

Used for secondary monitoring purposes, this compact, dry dial cold water meter is suitable for both single and multiple outlets. Designated as a class 'A' meter it has a magnetic coupling to the dial from the turbine and can be fitted both horizontally and vertically. Suitable for water operating temperatures of up to 30°C. The dial can be rotated 360° to enable easy reading of the counter.



WATER CONTROLS FOR A MODERN WORLD

# RELIANCE

TEMPERATURE  
CONTROL

FLOW  
CONTROL

HEATING SYSTEM  
COMPONENTS

WASHROOM  
SYSTEMS

HEATING & COOLING  
DISTRIBUTION SYSTEMS

PLUMBING  
SYSTEMS

# SINGLE-JET COLD WATER METER: 100 SERIES

## FEATURES AND BENEFITS

- Scale resistant integral components give long life and good accuracy
- Fully rotational dry dial enables easy reading of meter regardless of installation siting
- Compact design gives freedom of choice for either vertical or horizontal installation
- Careful design consideration ensures silent operation
- Supplied complete with nuts, tails and washers

## MATERIALS

|                     |                     |
|---------------------|---------------------|
| Main body:          | Stamped brass       |
| Turbine paddle:     | Polyamide polymer   |
| Counter casing:     | Polycarbonate       |
| Counter components: | Polystyrene         |
| Gears:              | Acetyl polymer      |
| Sealing plate:      | Polystyrene polymer |
| Bearing:            | Sapphire            |
| Seals:              | Elastomer           |
| Protective plating: | Nickel              |

## SPECIFICATIONS

|                                |          |
|--------------------------------|----------|
| Maximum pressure:              | 16.0 bar |
| Pressure loss at Qmax:         | 1.0 bar  |
| Maximum operating temperature: | 30°C     |

## STANDARDS AND APPROVALS

- Manufactured by an ISO 9001 registered company
- Conforms to ISO 4064 Part 1 class 'A'
- WRAS Approved

## NOMINAL FLOW RATES

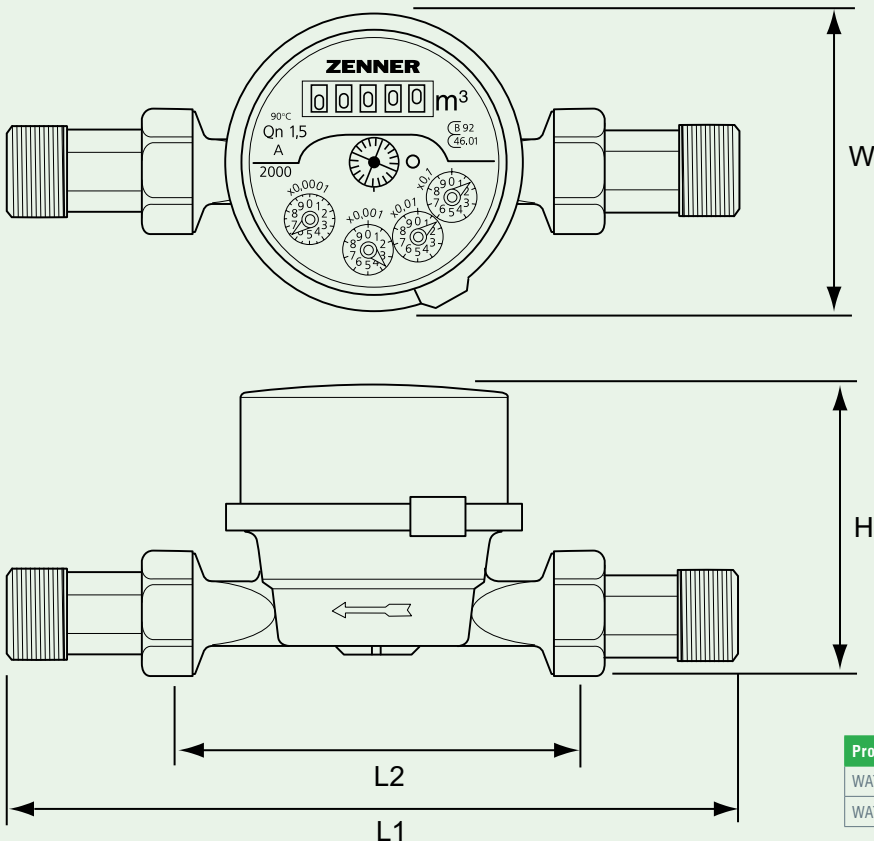
|             |                      |
|-------------|----------------------|
| WATM100001: | 1.5m <sup>3</sup> /h |
| WATM100004: | 2.5m <sup>3</sup> /h |

## HOW TO SPECIFY

A single-jet, dry dial, cold water meter for secondary monitoring purposes. Must incorporate a moveable dial, MBSP connections, as well as scale resistant internal components. (Include correct product range code)

## DIMENSIONS

All dimensions in mm unless otherwise stated.



| Product Code | Connection | L1  | L2  | H  | W  |
|--------------|------------|-----|-----|----|----|
| WATM100001   | 1/2" MBSP  | 190 | 110 | 69 | 72 |
| WATM100004   | 3/4" MBSP  | 228 | 130 | 69 | 72 |