



SINGLE-JET HOT WATER METER: 100 SERIES

- WATM110001 1/2" MBSP hot water meter
WATM110004 3/4" MBSP hot water meter

OVERVIEW

Used for secondary monitoring purposes, this compact, dry dial hot water meter is suitable for both single and multiple outlets. Designated as a class 'A' meter it has a magnetic coupling to the dial from the turbine and can be fitted both horizontally and vertically. Suitable for water operating temperatures of up to 90°C. The dial can be rotated 360° to enable easy reading of the counter.



WATER CONTROLS FOR A MODERN WORLD

RELIANCE

TEMPERATURE
CONTROL

FLOW
CONTROL

HEATING SYSTEM
COMPONENTS

WASHROOM
SYSTEMS

HEATING & COOLING
DISTRIBUTION SYSTEMS

PLUMBING
SYSTEMS

SINGLE-JET HOT WATER METER: 100 SERIES

FEATURES AND BENEFITS

- Scale resistant integral components give long life and good accuracy
- Fully rotational dry dial enables easy reading of meter regardless of installation position
- Compact design gives freedom of choice for either vertical or horizontal installation
- Silent operation
- Can be upgraded after installation for pulse output and radio transmission

SPECIFICATIONS

Maximum pressure:	16.0 bar
Pressure loss at Qmax:	1.0 bar
Maximum operating temperature:	90°C

MATERIALS

Main body:	Stamped brass
Turbine paddle:	Polyamide polymer
Counter casing:	Polycarbonate
Counter components:	Polystyrene
Gears:	Acetyl polymer
Sealing plate:	Polystyrene polymer
Bearing:	Sapphire
Seals:	Elastomer
Protective plating:	Nickel

STANDARDS AND APPROVALS

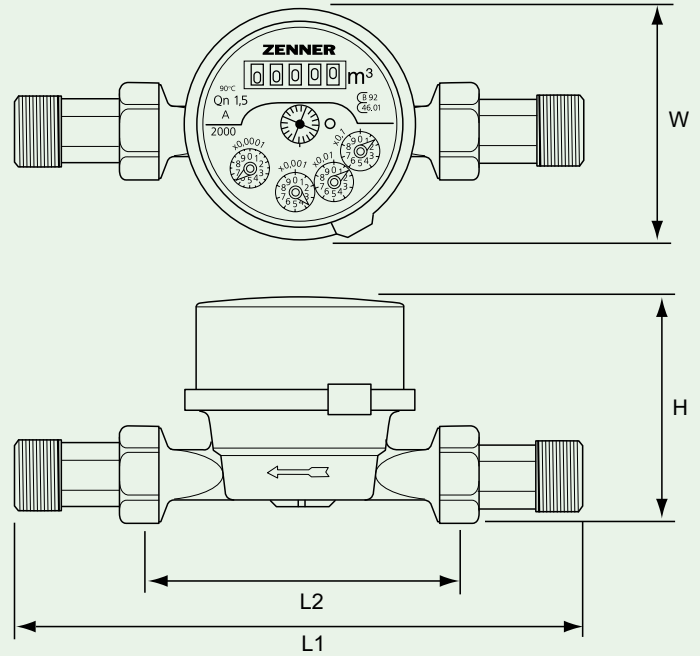
- WRAS Approved
- Manufactured by an ISO 9001 registered company
- Conforms to ISO 4064 Part 1 class 'A'

NOMINAL FLOW RATES

WATM110001:	1.5m ³ /h
WATM110004:	2.5m ³ /h

DIMENSIONS

All dimensions in mm unless otherwise stated.



Product Code	Connection	L1	L2	H	W
WATM110001	1/2" MBSP Union	190	110	69	72
WATM110004	3/4" MSBP Union	228	130	69	72