



SINGLE-JET COLD WATER METER: 120 SERIES

WATM120001 ½" MBSP cold water meter, pulse output

WATM120004 ¾" MBSP cold water meter, pulse output

OVERVIEW

Used for secondary monitoring purposes this compact, pulse output, dry dial cold water meter is suitable for both single and multiple outlets. Designated as a class 'A' meter it has a magnetic coupling to the dial from the turbine and can be fitted both horizontally and vertically. Suitable for water operating temperatures of up to 30°C. The dial can be rotated 360° to enable easy reading of the counter.



WATER CONTROLS FOR A MODERN WORLD

RELIANCE

TEMPERATURE
CONTROL

FLOW
CONTROL

HEATING SYSTEM
COMPONENTS

WASHROOM
SYSTEMS

HEATING & COOLING
DISTRIBUTION SYSTEMS

PLUMBING
SYSTEMS

SINGLE-JET COLD WATER METER: 120 SERIES

FEATURES AND BENEFITS

- Scale resistant integral components give long life and good accuracy
- Fully rotational dry dial enables easy reading of meter regardless of installation position
- Compact design gives freedom of choice for either vertical or horizontal installation
- Silent operation
- Can be upgraded after installation for radio transmission

SPECIFICATIONS

Maximum pressure:	16.0 bar
Pressure loss at Qmax:	1.0 bar
Maximum operating temperature:	30°C

MATERIALS

Main body:	Stamped brass
Turbine paddle:	Polyamide polymer
Counter casing:	Polycarbonate
Counter components:	Polystyrene
Gears:	Acetyl polymer
Sealing plate:	Polystyrene polymer
Bearing:	Sapphire
Seals:	Elastomer
Protective plating:	Nickel

STANDARDS AND APPROVALS

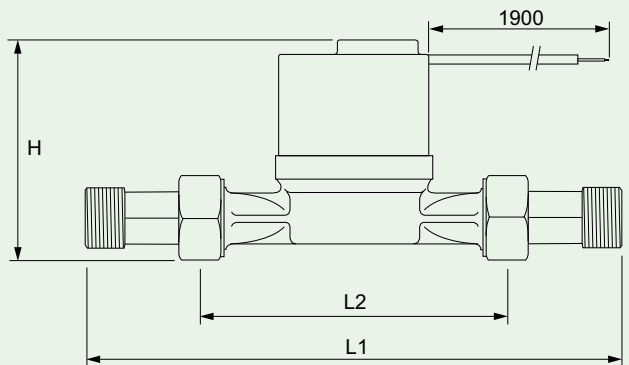
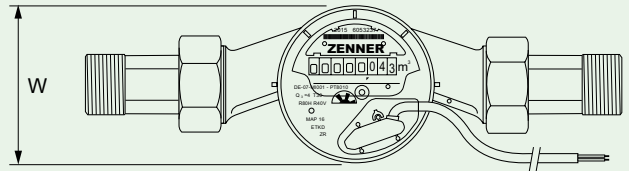
- Manufactured by an ISO 9001 registered company
- Conforms to ISO 4064 Part 1 class 'A'
- WRAS Approved

NOMINAL FLOW RATES

WATM120001:	1.5m ³ /h
WATM120004:	2.5m ³ /h

DIMENSIONS

All measurements in mm unless otherwise stated



Product Code	Connection	L1	L2	H	W
WATM120001	½" MBSP	188mm	110mm	86mm	60mm
WATM120004	¾" MBSP	228mm	130mm	98mm	68mm