



SINGLE-JET HOT WATER METER: 125 SERIES

WATM125001 1/2" MBSP hot water meter, pulse output

WATM125004 3/4" MBSP hot water meter, pulse output

OVERVIEW

Used for secondary monitoring purposes, this compact, pulse output dry dial hot water meter is suitable for both single and multiple outlets. Designated as a class 'A' meter, it has a magnetic coupling to the dial from the turbine and can be fitted both horizontally and vertically. Suitable for water operating temperatures of up to 90°C. The dial can be rotated 360° to enable easy reading of the counter.



WATER CONTROLS FOR A MODERN WORLD

RELIANCE

TEMPERATURE
CONTROL

FLOW
CONTROL

HEATING SYSTEM
COMPONENTS

WASHROOM
SYSTEMS

HEATING & COOLING
DISTRIBUTION SYSTEMS

PLUMBING
SYSTEMS

SINGLE-JET HOT WATER METER: 125 SERIES

FEATURES AND BENEFITS

- Scale resistant integral components give long life and good accuracy
- Fully rotational dry dial enables easy reading of meter regardless of installation position
- Compact design gives freedom of choice for either vertical or horizontal installation
- Silent operation
- Can be upgraded after installation for radio transmission

SPECIFICATIONS

Maximum pressure:	16.0 bar
Pressure loss at Qmax:	1.0 bar
Maximum operating temperature:	90°C

MATERIALS

Main body:	Stamped brass
Turbine paddle:	Polyamide polymer
Counter casing:	Polycarbonate
Counter components:	Polystyrene
Gears:	Acetyl polymer
Sealing plate:	Polystyrene polymer
Bearing:	Sapphire
Seals:	Elastomer
Protective plating:	Nickel

STANDARDS AND APPROVALS

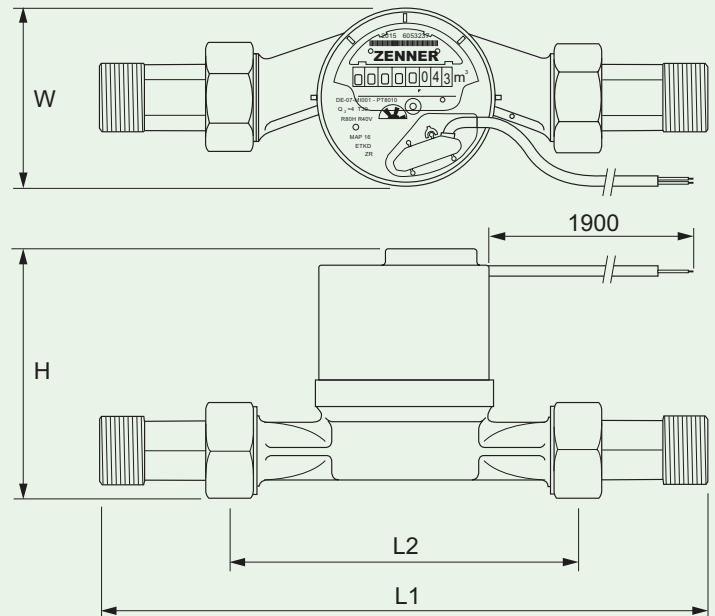
- WRAS Approved
- Manufactured by an ISO 9001 registered company
- Conforms to ISO 4064 Part 1 class 'A'

NOMINAL FLOW RATES

WATM125001:	1.5m ³ /h
WATM125004:	2.5m ³ /h

DIMENSIONS

All dimensions in mm unless otherwise stated.



Product Code	Connection	L1	L2	H	W
WATM125001	1/2" MBSP	188	110	86	60
WATM125004	3/4" MSBP	228	130	98	68