

Single-Jet Cold Water Meter

Description

Used for secondary monitoring purposes this compact, dry dial cold water meter is suitable for both single and multiple outlets with a wide range of water qualities. Designated as a class 'A' meter it has a magnetic coupling to the dial from the turbine and can be fitted both horizontally and vertically. Suitable for water operating temperatures of up to 30°C. The dial can be rotated 360° to enable easy reading of the counter.

Product Range

WATM 100 001: 1/2" MBSP cold water meter
 WATM 100 002: 15mm compression cold water meter
 WATM 100 003: 15mm capillary cold water meter
 WATM 100 004: 3/4" MBSP cold water meter
 WATM 100 005: 22mm compression cold water meter
 WATM 100 006: 22mm capillary cold water meter

Materials

Main Body: Stamped Brass
 Turbine Paddle: Polyamide Polymer
 Counter Casing: Polycarbonate
 Counter Components: Polystyrene
 Gears: Acetyl Polymer
 Sealing Plate: Polystyrene Polymer
 Bearing: Sapphire
 Seals: Elastomer
 Protective Plating: Nickel

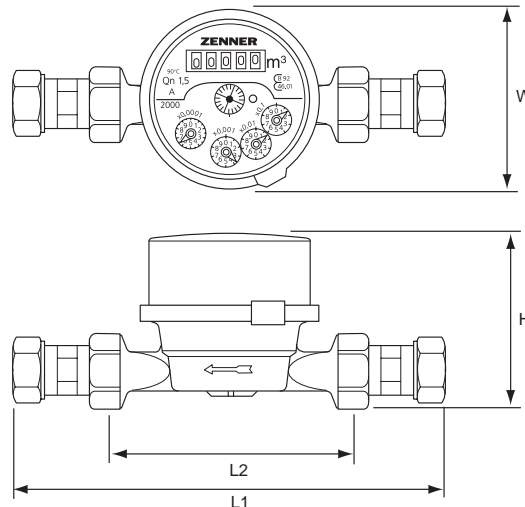
Standards

Manufactured in an ISO 9001 registered company
 Conforms to ISO 4064 Part 1 class 'A'

Nominal Flow Rates

WATM 100 001 to WATM 100 003 - 1.5m³/h
 WATM 100 004 to WATM 100 006 - 2.5m³/h

Dimensions



	Connection	L1	L2	H	W
WATM 100 001	1/2" MBSP	190	110	69	72
WATM 100 002	15mm compression	141	110	69	72
WATM 100 003	15mm capillary	125	110	69	72
WATM 100 004	3/4" MBSP	228	130	69	72
WATM 100 005	22mm compression	153	130	69	72
WATM 100 006	22mm capillary	134	130	69	72

All dimensions in mm unless stated

Specifications

Maximum pressure: 16 bar
 Pressure loss at Q_{max}: 1 bar
 Maximum operating temperature: 30°C

How to Specify

A single-jet, dry dial, cold water meter for secondary monitoring purposes. Must incorporate a moveable dial, compression, MBSP or capillary connections, as well as scale resistant internal components (include correct product range code).

Guarantee

All Reliance® products undergo strict performance tests prior to despatch, and are guaranteed against faulty materials and workmanship for one year from date of purchase. This is in addition to any statutory rights.

Contacts:	Sales Enquiries	Technical Support
Telephone:	+44 (0)1386 712400	+44 (0)1386 47148
Fax:	+44 (0)1386 47028	+44 (0)1386 42217
E-Mail:	sales@rwc.co.uk	technical@rwc.co.uk



Reliance Water Controls®
 Worcester Road, Evesham, Worcestershire, WR11 4RA, UK
 Tel: +44 (0)1386 47148 Fax: +44 (0)1386 47028 www.rwc.co.uk

