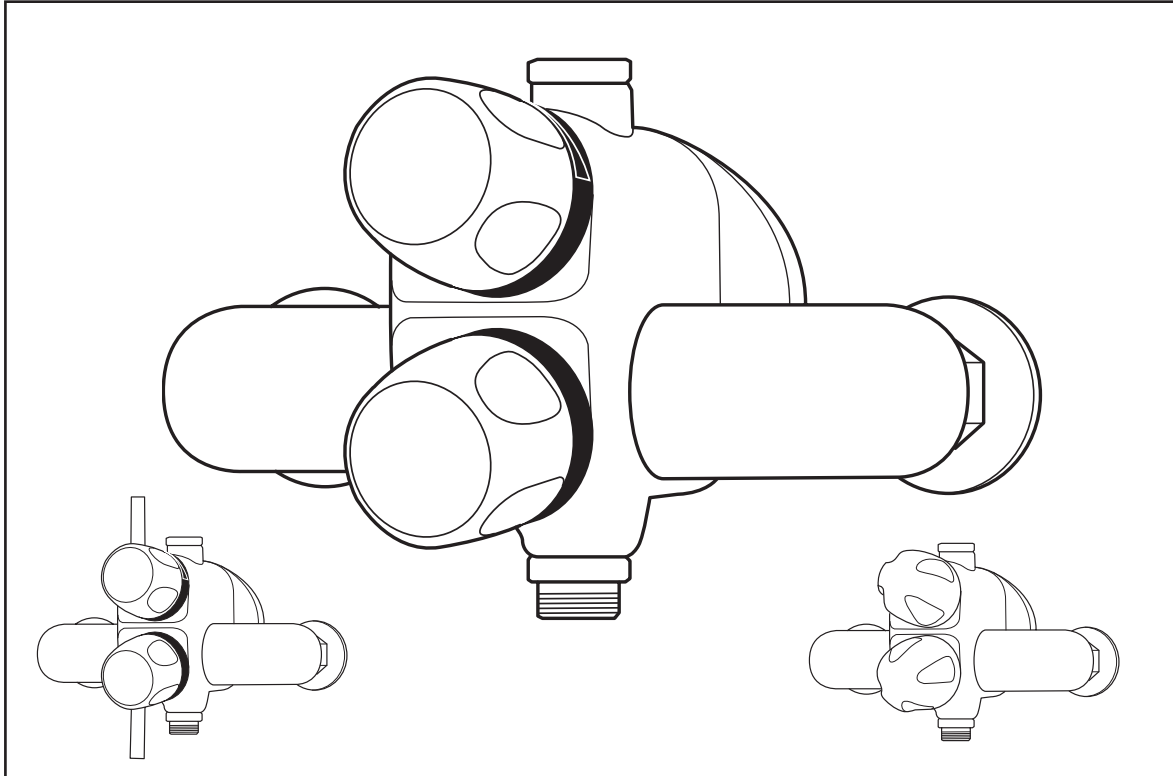


Heatguard[®] DC153 TMV3 Shower



Ultra modern, streamlined shower with dual control has specially designed large internal flow paths to give excellent flow rates.

Product Features and Benefits

- TMV3 approved shower valve for safe use in installations where users are deemed to be at risk.
- Unique, easy to use separate controls unlike conventional ring within ring design.
- Single piece thermostatic cartridge maintains excellent temperature control whilst simplifying maintenance thus reducing downtime.
- Push-fit connections make for easy installation reducing site time.
- Rotational elbows with a choice of top, bottom or rear inlets gives freedom of installation.
- 120° ceramic disc flow control for easy operation.
- Choice of body colour and handle styles gives customer flexibility when selecting a shower valve.
- Top or bottom outlets can be changed on site for complete flexibility of installation.

- ✓ WRAS Approved.
- ✓ NHS Estates TMV3 Approved

Heatguard[®] DC153 TMV3 Shower Valve

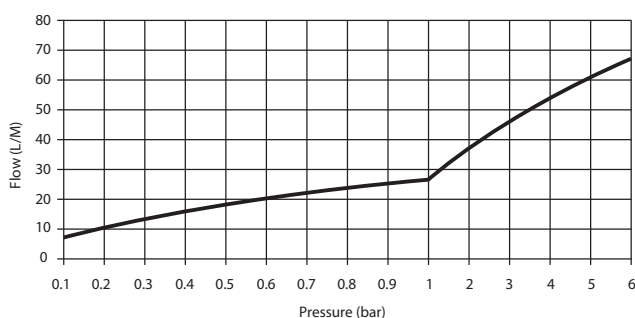
Description

The Heatguard[®] DC153 is a TMV3 shower valve of contemporary style with unique, easy to use separate controls which allows more accurate temperature selection. The specially designed large internal flow paths give a greater flow than normally experienced. A range of body colours with three different handle styles gives the customer a wide choice of variations which will suit all those selecting a contemporary style shower valve. Push fit connections and a choice of either top or bottom outlets gives freedom of design and installation. The outlet fitting itself is removable and reversible so that either compression or flat faced fittings can be used. Large surface area serviceable strainers and one piece Heatguard[®] thermostatic cartridge system and flow control cartridge ensures servicing is quick and easy.

Product Range

THRM 153 001:	Heatguard [®] DC153 chrome body,
THRM 153 002:	white fluted handles
THRM 153 003:	Heatguard [®] DC153 chrome chrome fluted handles
THRM 153 010:	Heatguard [®] DC153 white body, white fluted handles
THRM 153 011:	Heatguard [®] DC153 chrome body, white handles
THRM 153 012:	Heatguard [®] DC153 chrome body, chrome handles
THRM 153 021:	Heatguard [®] DC153 Lever white body, white handles
	chrome body, chrome handles

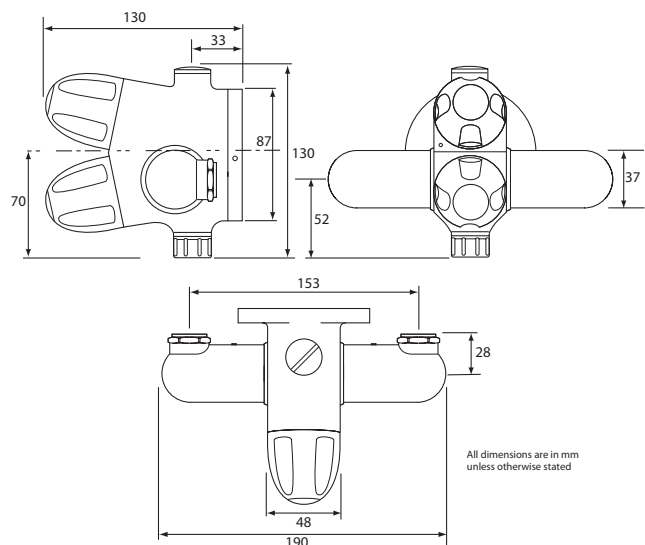
Performance



Materials

Body:	Cast brass
Inlet strainers:	Stainless Steel
Cartridge:	Brass CW 614 N
Seals:	NBR
Piston coating:	PTFE
Protective coatings:	Chrome or white epoxy paint

Dimensions



Specifications

Minimum flow pressure:	0.2 bar
Maximum flow pressure:	5.0 bar
Static test pressure:	10 bar
Max. pressure loss ratio:	5:1
Temperature setting range:	30°C ± 2°C
Max. hot water temperature:	85°C
Min. hot/blend temp. differential:	10°C

Standards

NHS Estates TMV3 approval number BC378/0808

Approvals

WRAS approval number 0812042

How to Specify

Contemporary styled TMV3 approved thermostatic mixing shower valve with separate flow and temperature control handles and a choice of either a top or bottom outlet port. The outlet fitting itself must be removable and reversible so that either compression or flat faced fittings can be used. Inlets should be 15mm push fit. (Include correct product range code).

Guarantee

All Reliance[®] products undergo strict performance tests prior to despatch, and are guaranteed against faulty materials and workmanship for one year from date of purchase. This is in addition to any statutory rights.



Reliance Water Controls[®]
 Worcester Road, Evesham, Worcestershire, WR11 4RA, UK
 Tel: +44 (0)1386 712400 Fax: +44 (0)1386 712401 www.rwc.co.uk

